

**FUERZA ARMADA DE EL SALVADOR  
ESTADO MAYOR CONJUNTO DE LA FUERZA ARMADA**

**EMERGENCY RESPONSE  
TROPICAL DEPRESSION 12E  
10-19OCT11 A CHALLENGE TO  
SIMULATER DESIGNER**



**HOW CAN YOU HELP EL SALVADOR?**

**2011**

# EMERGENCY RESPONSE FOR TROPICAL DEPRESSION 12E 10-20OCT11

## OUTLINE

- *BACKGROUND*
- *IMPACT IN EL SALVADOR*
- *MENACES*



# BACKGROUND

15:00 14-OCT-2011 GMT ©Copyright MSI Corporation <http://www.usi.com>

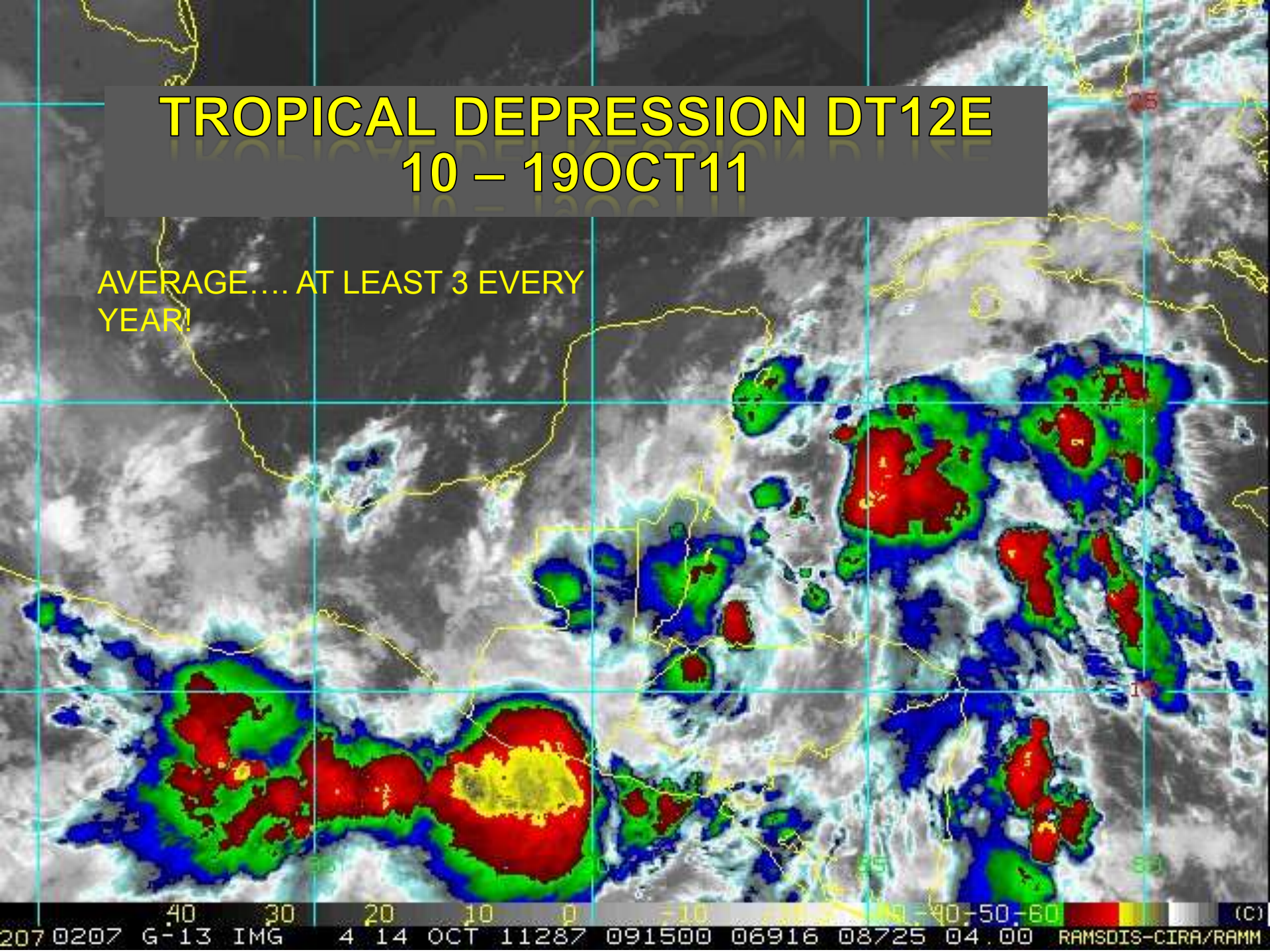
TROPICAL DEPRESSION 12E  
10-20 OCT 11

- 275 persons /km<sup>2</sup>
- at least 3 every year
- an earthquake every 15 years



# TROPICAL DEPRESSION DT12E 10 – 19 OCT 11

AVERAGE.... AT LEAST 3 EVERY  
YEAR!





# PHENOMENON IMPACTES

130014OCT011

190014OCT011



210014OCT011

060015OCT011





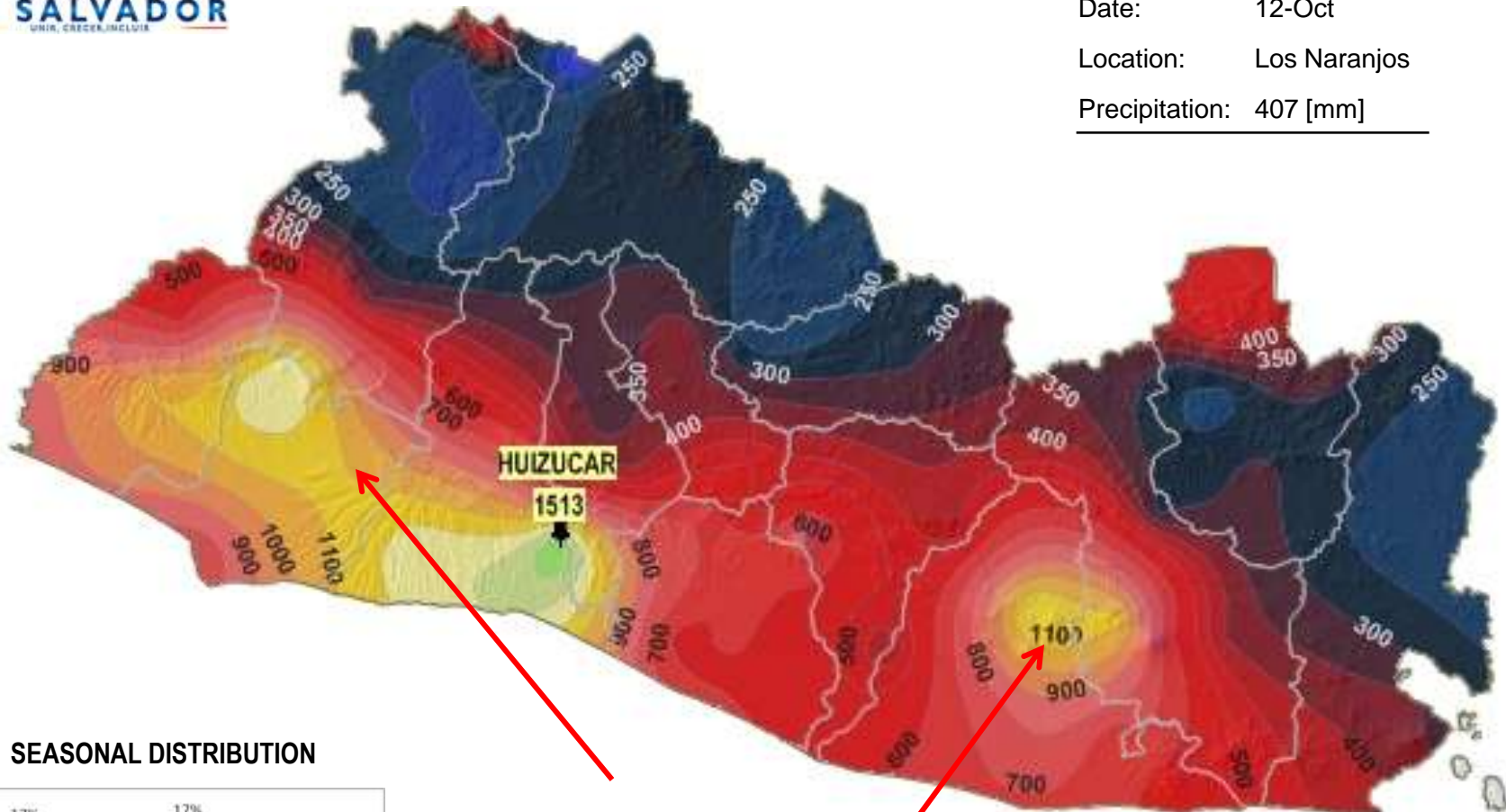


## TROPICAL DEPRESSION AND LOW PRESSURE SYSTEM 12 E (2011)

MAX IN 24 HR

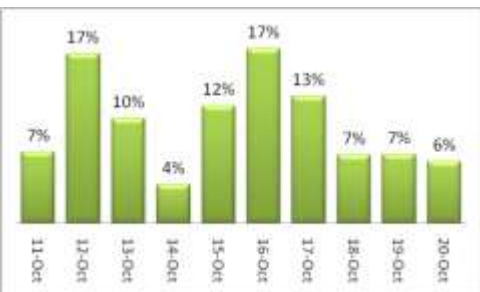
Date:	12-Oct
Location:	Los Naranjos
Precipitation:	407 [mm]

Rain [mm]



RECORD RAIN FALL

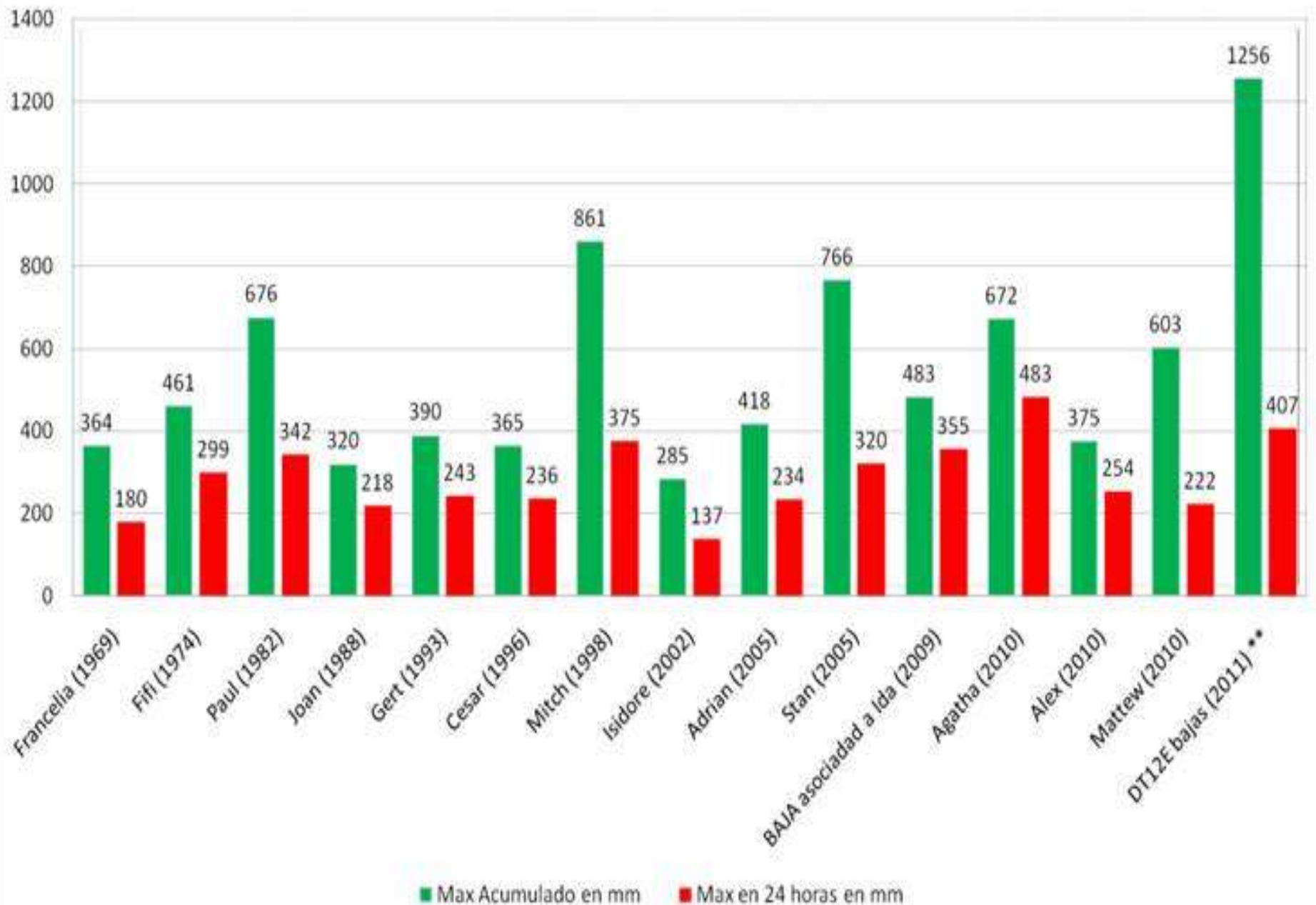
### SEASONAL DISTRIBUTION



240 HR

MAX PRECIPITATION	1513
LOCATION	Huizúcar
Department	La Libertad

# Severe Events that have affected El Salvador from 1960-2011



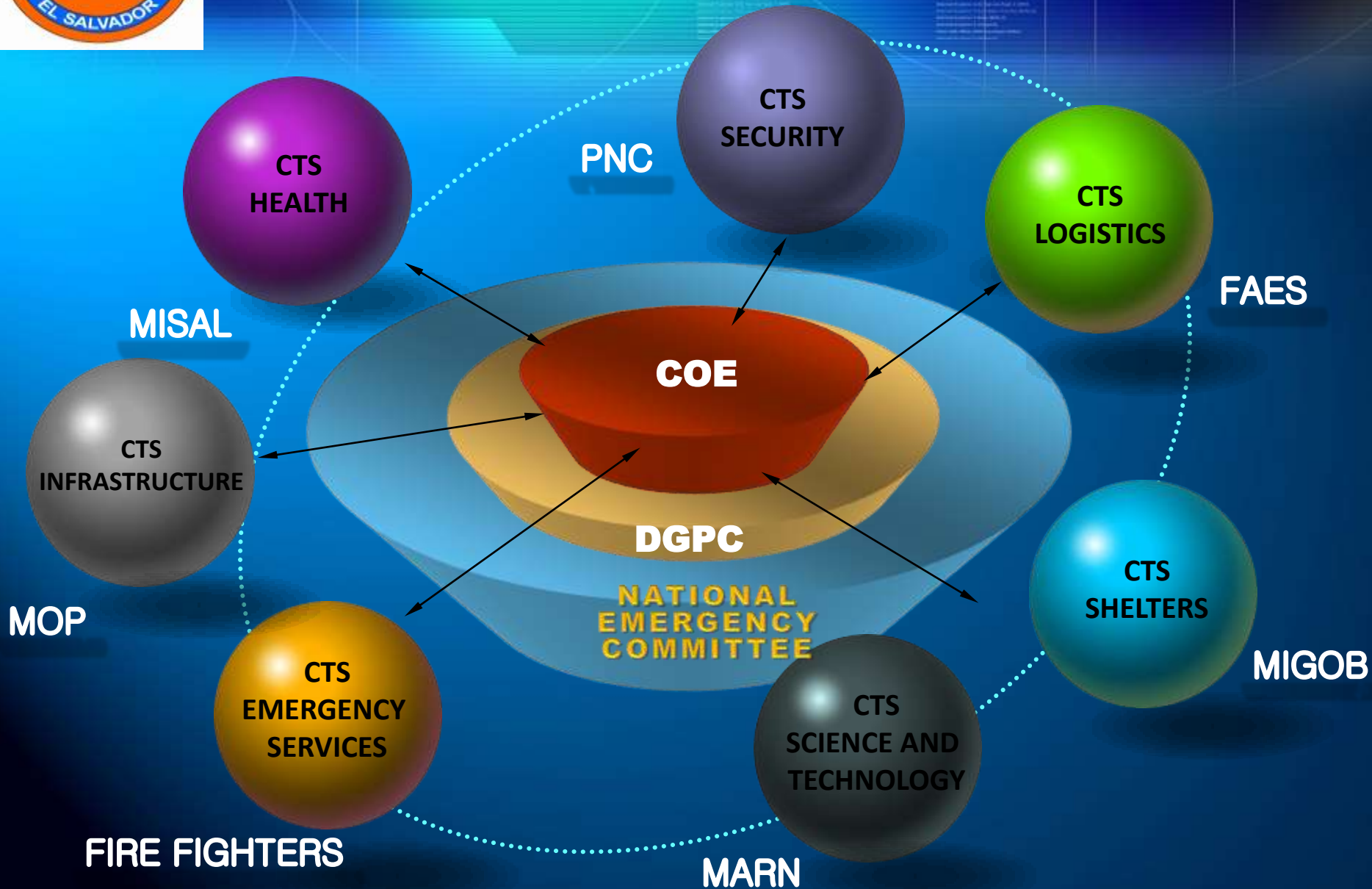
# NATIONAL DISASTER



**15OCT11 NATIONAL EMERGENCY DECLARATION**



# FROM THE DIRECTOR OF CIVIL PROTECTION













# DAMAGED HOME

Department

Homes Destroyed

Homes Partially  
Destroyed

High Risk  
Homes



Ministerio de  
Obras Públicas,  
Transporte, Vivienda  
y Desarrollo Urbano



# CUMULATIVE DAMAGE 11-10-2011 TO 1100 on 22-10-2011

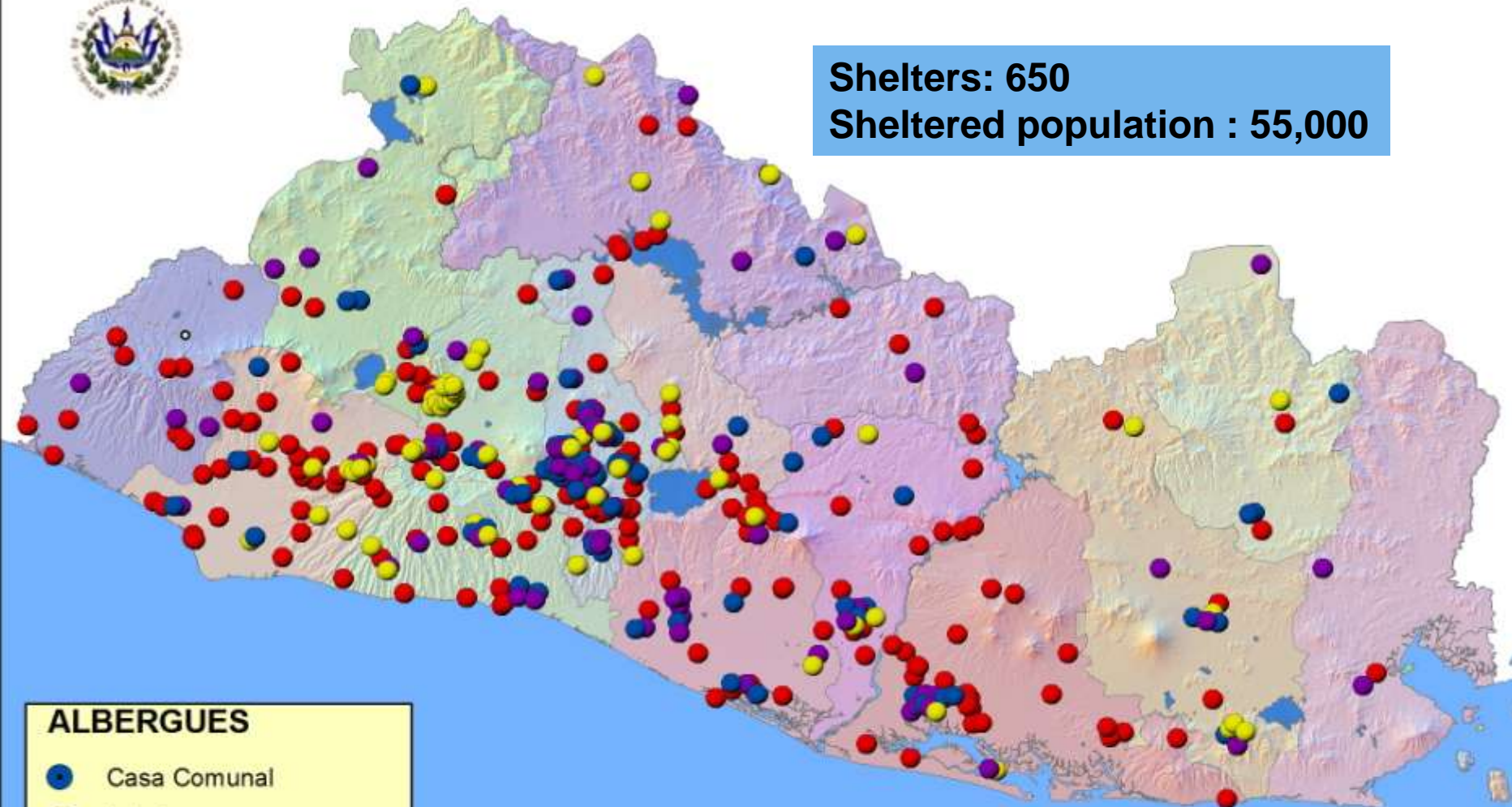
<b>Partial Cumulative Total</b>	
<b>Closed streets</b>	18
<b>Damaged streets</b>	24
<b>Streets affected by landslides</b>	1,196
<b>Damaged bridges</b>	21
<b>Collapsed bridges</b>	7
<b>Bridges at risk</b>	9
<b>Destroyed homes</b>	269
<b>Damaged homes</b>	979
<b>Homes at risk</b>	6,368



# Location of Shelters Tropical Depression 12E 10-19OCT 2011



**Shelters: 650**  
**Sheltered population : 55,000**



- ALBERGUES**
- Casa Comunal
  - Iglesia
  - Otros
  - ALBERGUES\_ESCUELAS



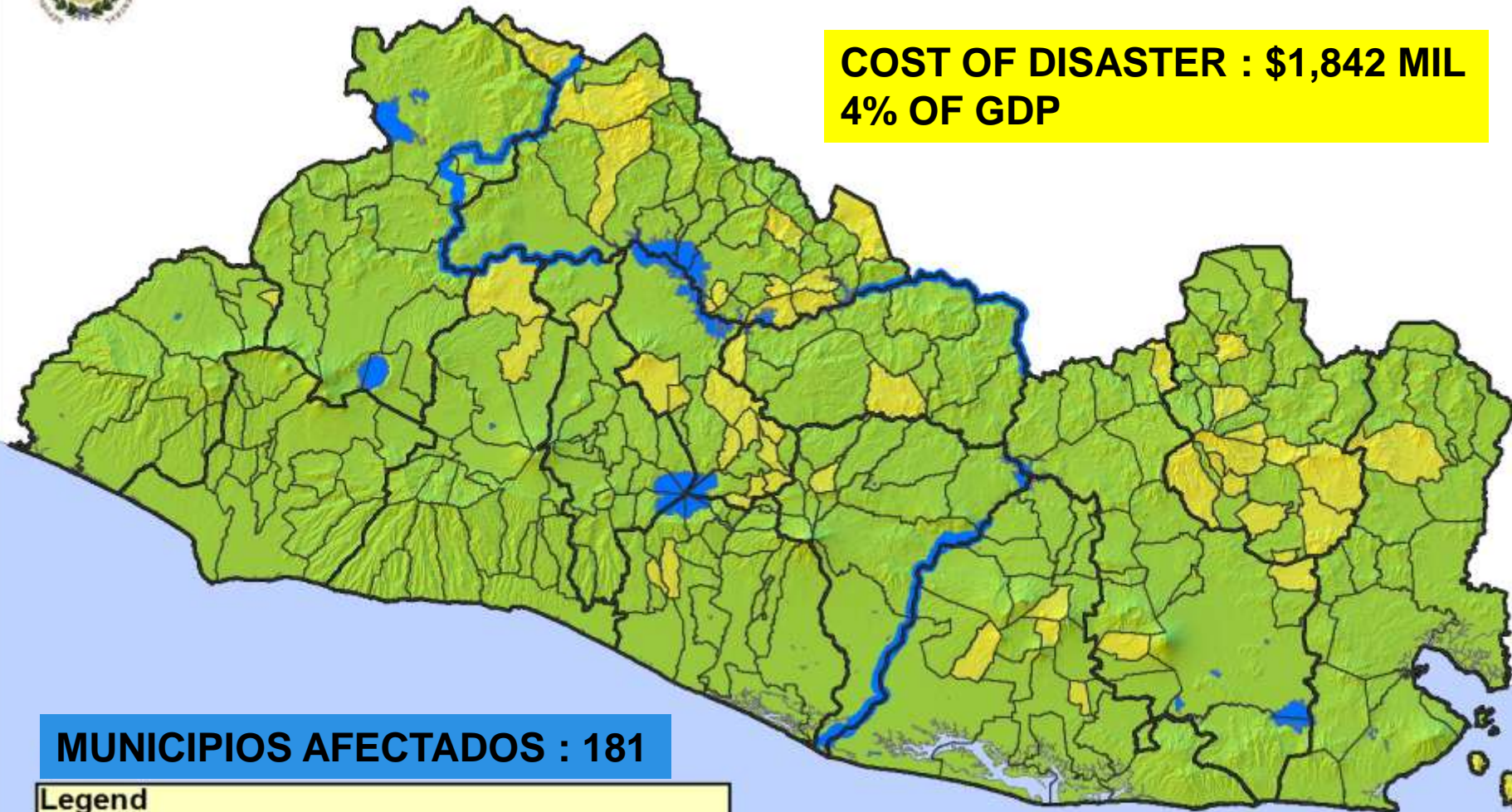
# MUNICIPIOS AFECTADOS

## DEPRESION TROPICAL Y BAJA PRESION 12 E

10 AL 19 DE OCTUBRE DE 2011





**COST OF DISASTER : \$1,842 MIL**  
**4% OF GDP**



**MUNICIPIOS AFECTADOS : 181**

### Legend

-  MUNICIPIOS SIN AFECTACION
-  MUNICIPIOS CON DIVERSAS AFECTACIONES

# 49,552 PEOPLE EVACUATED

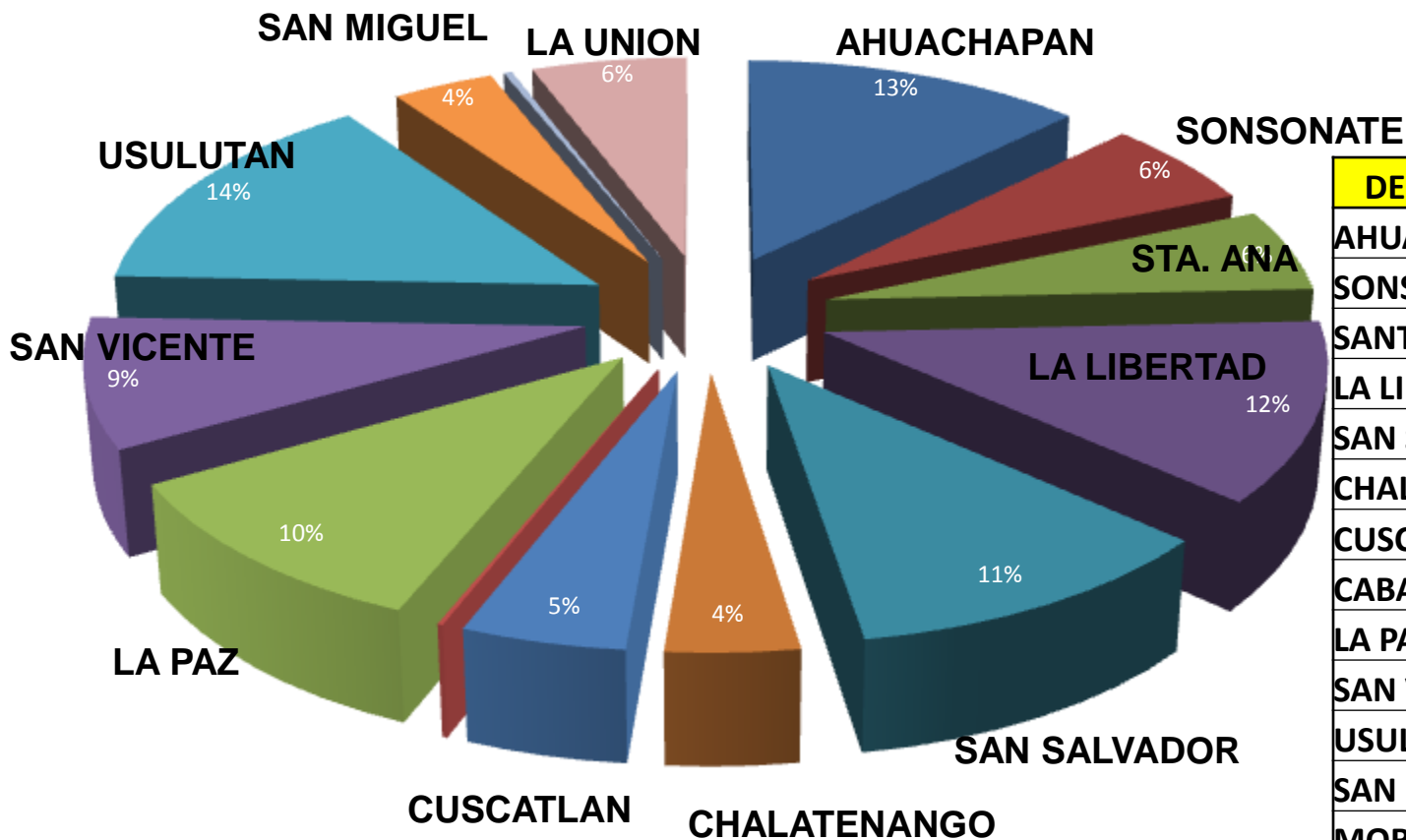




# SUPPLIES DISTRIBUTED BY CTS LOGISTICS DURING THE NATIONAL EMERGENCY RESPONSE BY "12E"



**361,940 PEOPLE SERVED**  
**657 METRIC TONS SUPPLIED**



DEPARTMENT	RATIONS
AHUACHAPAN	9,125
SONSONATE	4,327
SANTA ANA	4,063
LA LIBERTAD	9,085
SAN SALVADOR	7,934
CHALATENANGO	2,750
CUSCATLAN	3,386
CABAÑAS	113
LA PAZ	7,648
SAN VICENTE	6,361
USULUTAN	10,445
SAN MIGUEL	2,725
MORAZAN	225
LA UNION	4,161
<b>TOTAL</b>	<b>72,388</b>

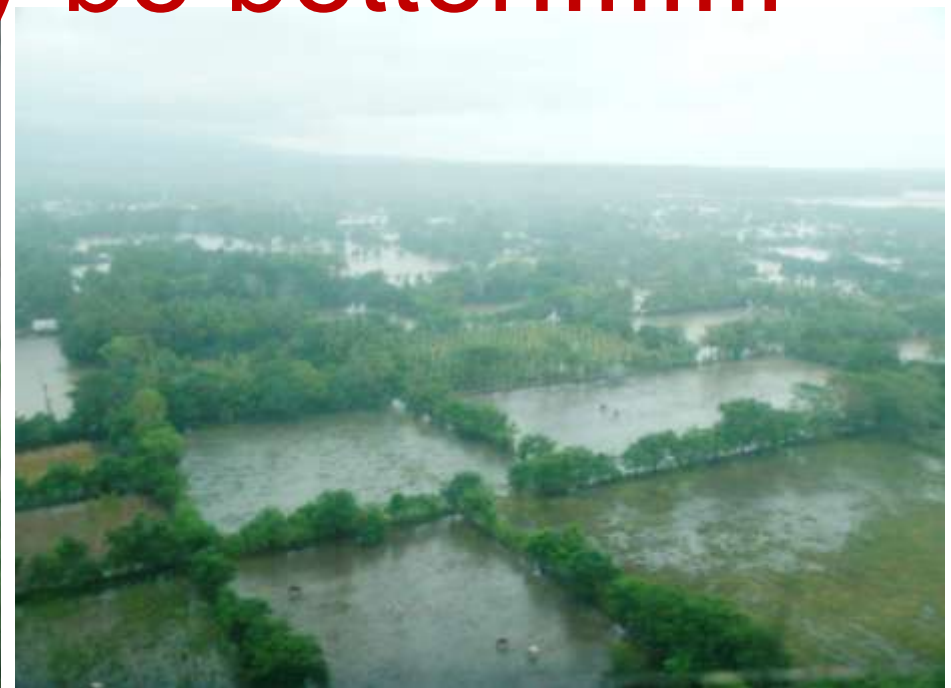


This is our reality!!!!!!!





Virtual may be better!!!!!!!!!!





How can you help us?????





Do you accept the  
challenge?????